



SPODUMENE EXPLORATION COUNTRY PLAY IN AUSTRIA

TSXV: AMR

INVESTOR PRESENTATION

April 2024

www.am-resources.ca

DISCLAIMER

This presentation contains certain “forward-looking statements”, including, but not limited to, statements regarding the Company’s strategic plans, timetables, the evolution of mineral reserves and resources, mine operating costs, capital expenditures, work programs, development plans, exploration programs, objectives, budgets and the possible determination of additional reserves. Forward looking statements express, at this date, the Company’s plans, estimates, forecasts, projections, expectations or beliefs as to future events and results.

Forward-looking statements involve a number of risks and uncertainties, and there can be no assurance that such statements will prove to be accurate. Therefore, actual results and future events could differ materially from those anticipated in such statements. Risks and uncertainties that could cause results or future events to differ materially from current expectations expressed or implied by the forward-looking statements include, but are not limited to, factors associated with fluctuations in the market price of metals, mining industry risks, exploration risks, environmental risks and hazards, uncertainty as to calculation of mineral reserves, requirement of additional financing or additional permits, authorizations or licenses, and risks of delays in construction and production.

AM RESOURCES PROFILE

ABOUT US

- **VISION:** Development of lithium (Li) exploration properties in Austria
- **MISSION :** Maximizing shareholders' return through sustainable economic and environmental mineral deposit development with a European first approach.
- **COMMITMENT:** Employ the latest and most efficient, sustainable exploration techniques.

SOLID TEAM AND STAKEHOLDERS

- Experienced Management, Board and Advisory committee
- Solid technical team with both local geologists and international pegmatite specialists
- Current management own over 30% of total share structure

EXPLORATION ASSETS

- **LITHIUM EXPLORATION COUNTRY PLAY**
- Proven lithium samples with grade up to 2,29 % Li₂O
- Frederick Property contain 112 pegmatites over 52.25km²
- Total of 1500 km² of prospective land with favorable geology
- Main asset within 5 km of Austria's Wolfsberg past producing lithium mine about to restart
- Located within 620km radius of 14 battery plants

MINING IN AUSTRIA

- **Tier 1 mining jurisdiction** with political will to encourage mining
- Realistic **low-cost exploration budget**
- Long mining tradition with the oldest operating mine (over 700 years)



SOLID MINING AND FINANCIAL EXPERTISE

MANAGEMENT TEAM | BOARD OF DIRECTORS | ADVISORY BOARD

LEADERSHIP

MANAGEMENT TEAM



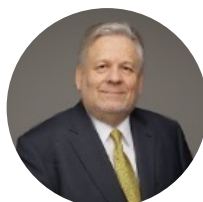
David Grondin, President & CEO

Mr. Grondin is a seasoned capital markets professional and mining executive. He has more than 25 years of advisory and leadership experience having begun his career in 1996 as a financial analyst and then moving into management roles at both public and private companies. During his career he has organized and structured numerous equity and debt financings, mergers and acquisitions, joint venture partnerships and strategic alliances.



Julien Desrosiers, COO Europe

Worked as a financial analyst when he moved to Europe and was involved in IPOs and project financing. He founded multiple successful junior exploration companies and is currently serving as CEO of Edelweiss Resources and sitting on executive boards. Additionally, his commitment to sustainability in the mining industry is reflected in his contributions to various publications, advocating for responsible practices and environmental stewardship.



Jean Lafleur (non-executive) QP

Senior Manager for Apian Capital Advisory LLP, M. Lafleur is a seasoned geologist. He held several decision-making, management and stewardship positions for several major and junior mining companies. M. Lafleur has unparalleled experience both as a skilled Mineral Exploration geologist from Early-Stage to Brownfields Projects and in the capital markets

BOARD OF DIRECTORS

David Grondin
Dominic Voyer
Wayne Isaacs
Julien Desrosiers
Martin Nicoletti



WHY AUSTRIA

STRATEGIC LOCATION | TIER 1 JURSDICTION | THOUSANDS OF YEARS OF MINING HISTORY

STRATEGIC LOCATION

EUROPEAN EV MARKET

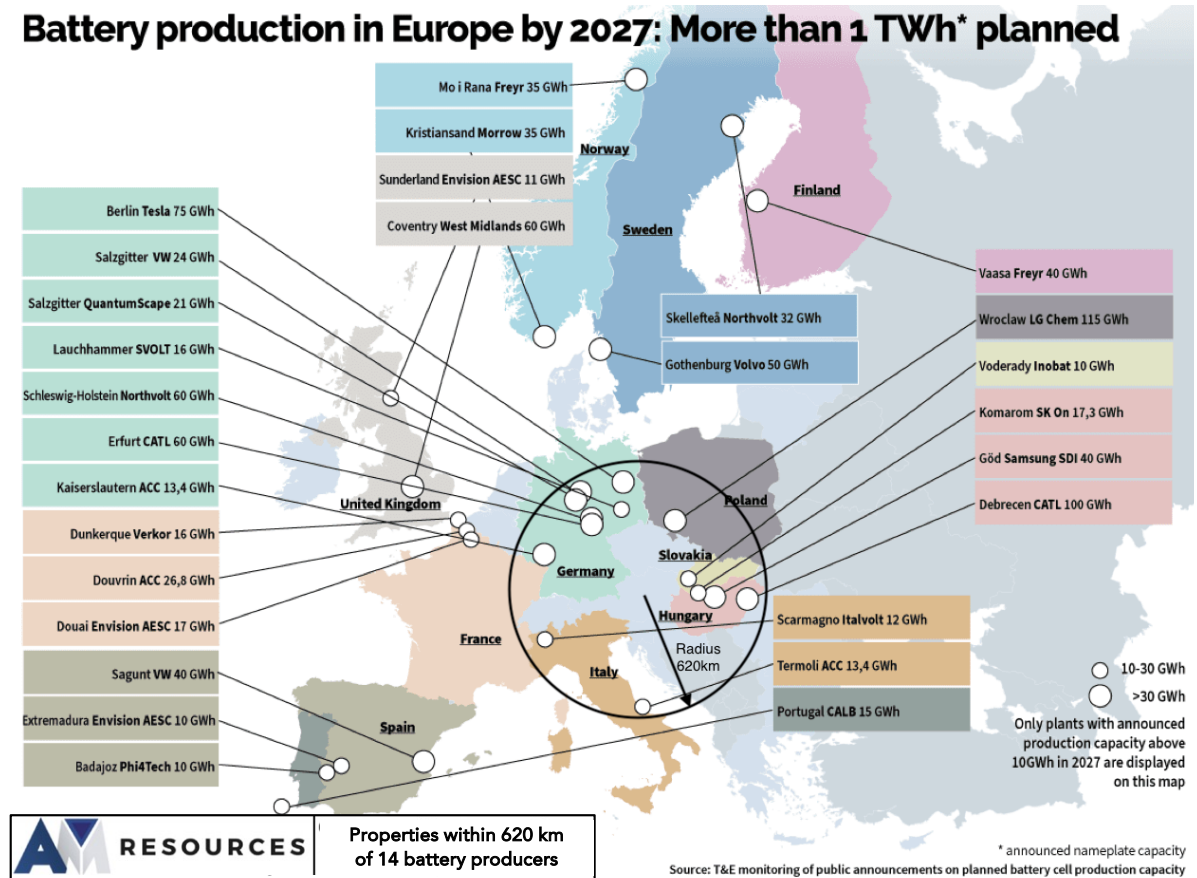
- Global EV revolution on going worldwide
- 20+ gigabattery factories planned in Europe in coming years
- European Critical Raw Materials Act adoption in Q1 2023
- 80% lithium self sufficiency targeted by 2025

AUSTRIA

- Fisker’s electric car manufacturer plant
- Mercedes G wagon manufacturing plant
- Current project to reopen Wolfsberg lithium mine
- Within 520km radius of 14 battery mamufactories

www.am-resources.ca

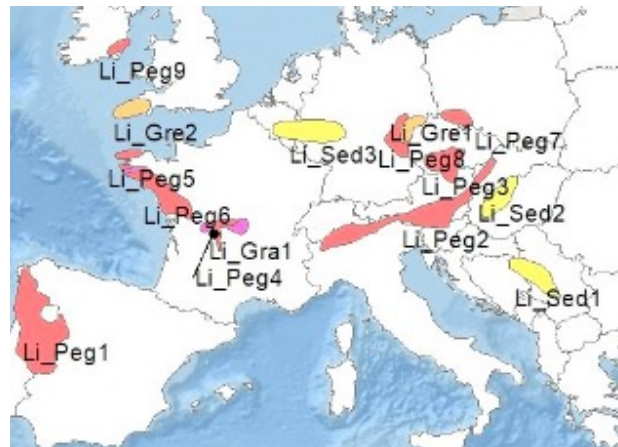
Battery production in Europe by 2027: More than 1 TWh* planned



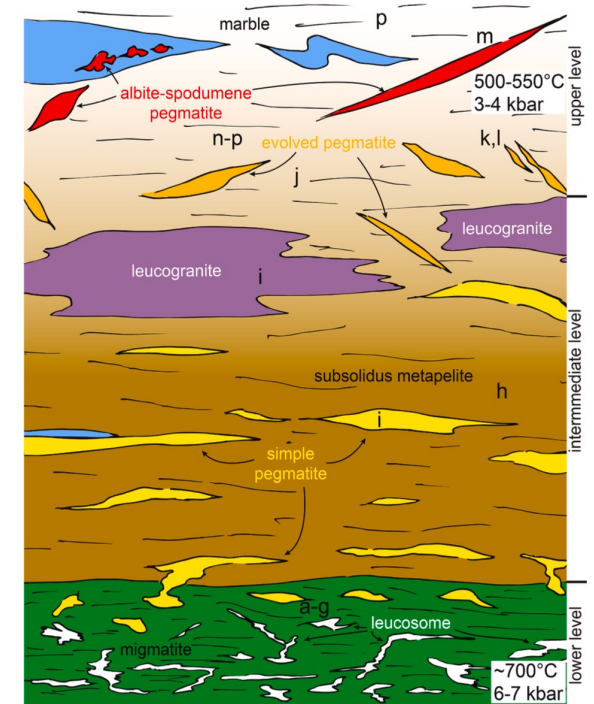
AUSTRIA PEGMATITE BELT

Europe's most prospective economical pegmatite belt?

In Austria, pegmatites are Lower Permian in age. Austroalpine pegmatite province (Li_Peg2) is composed of thousand pegmatites and extend 400km, from the north of Torino up to the south of Vienna. The Austroalpine unit of the Eastern Alps contains important fields. A good example is represented by the Weinebene spodumene-pegmatites (resources of 109,800 t Li₂O). These pegmatites appear to be generated by anatexis from mica schists and paragneisses at upper amphibolite to granulite facies coeval with lithospheric extension, causing crustal basaltic underplating, HT and LP metamorphism, as well as intense magmatic activity.



Austroalpine pegmatite province Pegmatite-aplite



albite-spodumene pegmatite of anatectic origin

MINERALOGY – ALL LITHIUM ARE NOT EQUAL

AUSTRIA ORE DEPOSITS

- CONVENTIONAL
- SPODUMENE $\text{LiAlSi}_2\text{O}_6$
- NO PETALITE – NO AMBLYGONITE
- PROVEN ECONOMICAL
- PROVEN BATTERY GRADE PURITY

Wolfsberg deposit mineralogy

- Amphibolite-hosted pegmatite (AHP) displays coarse-grained magmatic textures and consists mainly of **spodumene**, alongside quartz, albite, K-feldspar, and muscovite, with traces of accessory minerals.
- Mica schist-hosted Pegmatite (MHP) consists of a finer grain assemblage that includes **spodumene**, quartz, albite, and muscovite, presenting a more gneissic texture due to its alignment with the host rock's foliation.

www.am-resources.ca

	Type	Magmatic		Magmatic-hydrothermal	
		Petalite-Lepidolite ¹ pegmatites	High-Phosphorus Rare-element granites	Greisen developed in rare-element granite	Hydrothermal veins and alteration
Conventional ore deposit (current reserves and resources)	Ore mineral	Spodumene-bearing pegmatites		–	
	Examples	Spodumene		–	
	Examples	<i>Greenbushes (Australia), Manono (DR Congo), Whabouchi (Canada), Barroso (Portugal)</i>		–	
Unconventional ore deposit (some of current resources and possible future reserves)	Ore mineral	Petalite and/or Lepidolite ¹	Lepidolite ¹ , amblygonite, montebrasite	Zinnwaldite ² , Lepidolite ¹	Amblygonite, Tosudite / Li-rich muscovite, Lepidolite ¹ , zinnwaldite ²
	Examples	<i>Lousas, Gonçalo (Portugal), Chedeville (France)</i>	<i>Beauvoir (France), Argemela (Portugal), Yichun (China)</i>	<i>Zinnwald (Germany), Cinovec (Czech republic), Chavence (France)</i>	<i>Takatama (Japan), Bekogorskoe (Russia), Le Châtelet (France), San José (Spain), Argemela mine (Portugal)</i>

Economical & Proven

Spodumene
 $\text{LiAlSi}_2\text{O}_6$

Uneconomical

Petalite
 $\text{LiAlSi}_4\text{O}_{10}$

Amblygonite
 $(\text{Li,Na})\text{Al}(\text{PO}_4)(\text{F,OH})$

Unproven

Zinnwaldite
 $\text{KLiFe}_2\text{Al}(\text{AlSi}_3)\text{O}_{10}(\text{F,OH})_2$

Jadarite
 $\text{LiNaB}_3\text{Si}_7\text{O}_{20}(\text{OH})$

AUSTRIA TIER 1 JURIDICTION

LEGAL FRAME

- Clear juridic framework, tested and proven
- Stable democratic government

ACTIVE MINING INDUSTRY

- Over 4,000 active workforce
- Over 300 active mines
- Die Vision der Österreichischen Rohstoffstrategie 2030

INFRASTRUCTURE

- Renewable energy provides >70%
- Great roads and railroad network
- Housing is low cost
- Complete mining services industry
- Easy supply chain and logistics

www.am-resources.ca



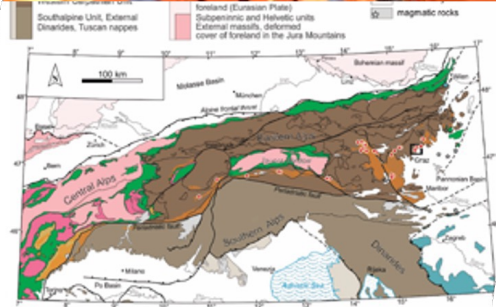
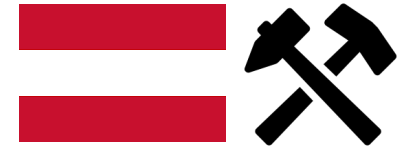


Fig. 1: Tectonic map of the Alps showing the paleogeographic origin of the major tectonic units of the Alps (modified after FROITZHEM et al., 2008). Additionally, the distribution of complexes contain Permian pegmatite and spodumene pegmatite is highlighted (modified after MALI, 2004 and KNOU al., 2018). Black square indicates the area of St. Radegund shown in Figure 6.

AUSTRIA MINING INDUSTRY



High potential for new discoveries

- Austria has thousands of years of mining history but limited modern exploration

Government wants to induce more exploration

- Mining is now under the Ministry of Finance

Renewable energy and impeccable logistics

- 100% renewable energy by 20230
- Railway density 59.2 km per 1,000 km² (EU avg. 47.4)

Mittersill (Sandvik) and Breitanau (RHI)

- Current successful operating underground mines

EU new critical mineral policy expected in Q2 2023

- Austria building European next lithium mine

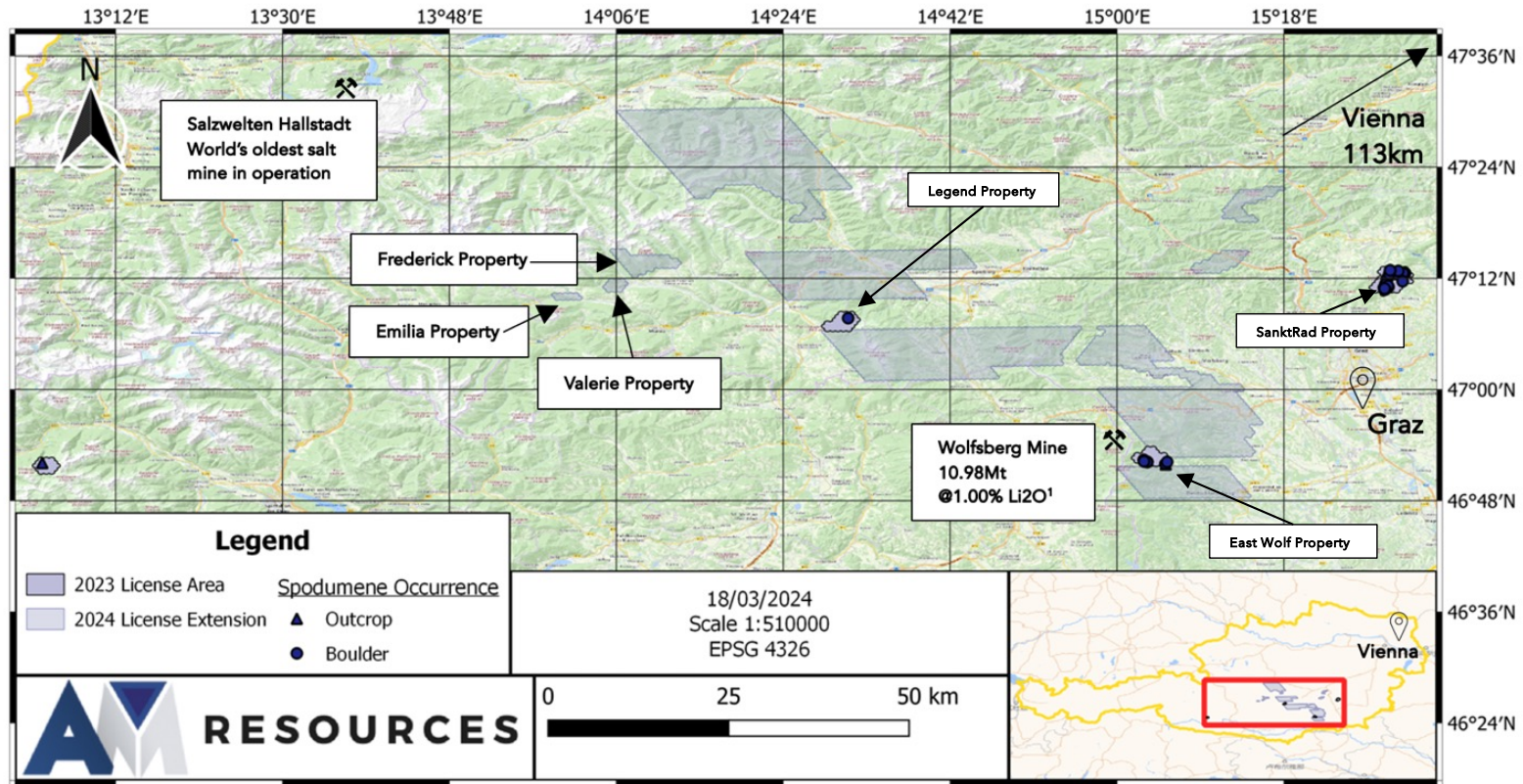


EXPLORATION LICENCES

1500 SQ. KM | LITHIUM SAMPLING UP TO 2.31%

COUNTRY SIZE PLAY

100% OWNED EXPLORATION LICENSES TOTALING OVER 1500 KM² OF LAND

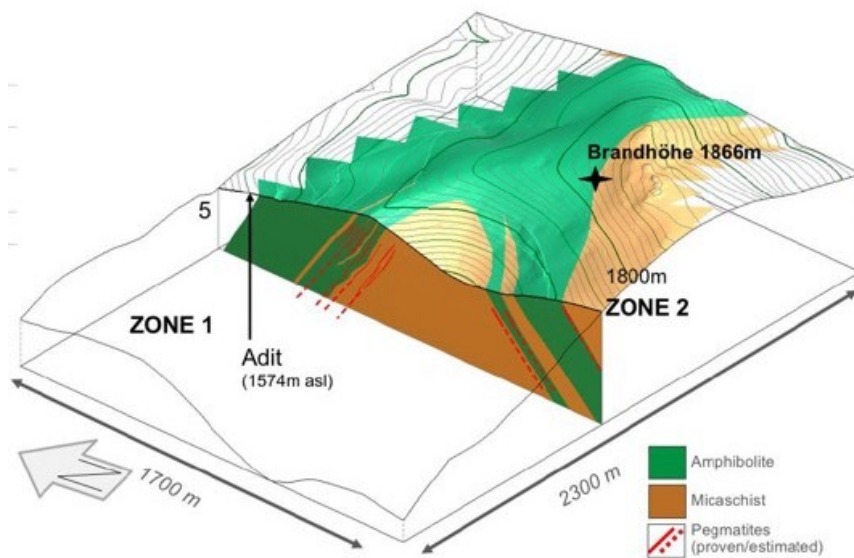


TRYING TO DUPLICATE WOLFSBERG DEPOSIT GEOLOGY

Pegmatites intruding

Amphibolite and Mica schist host rock

12.88m tones at 1% Li₂O



www.am-resources.ca

















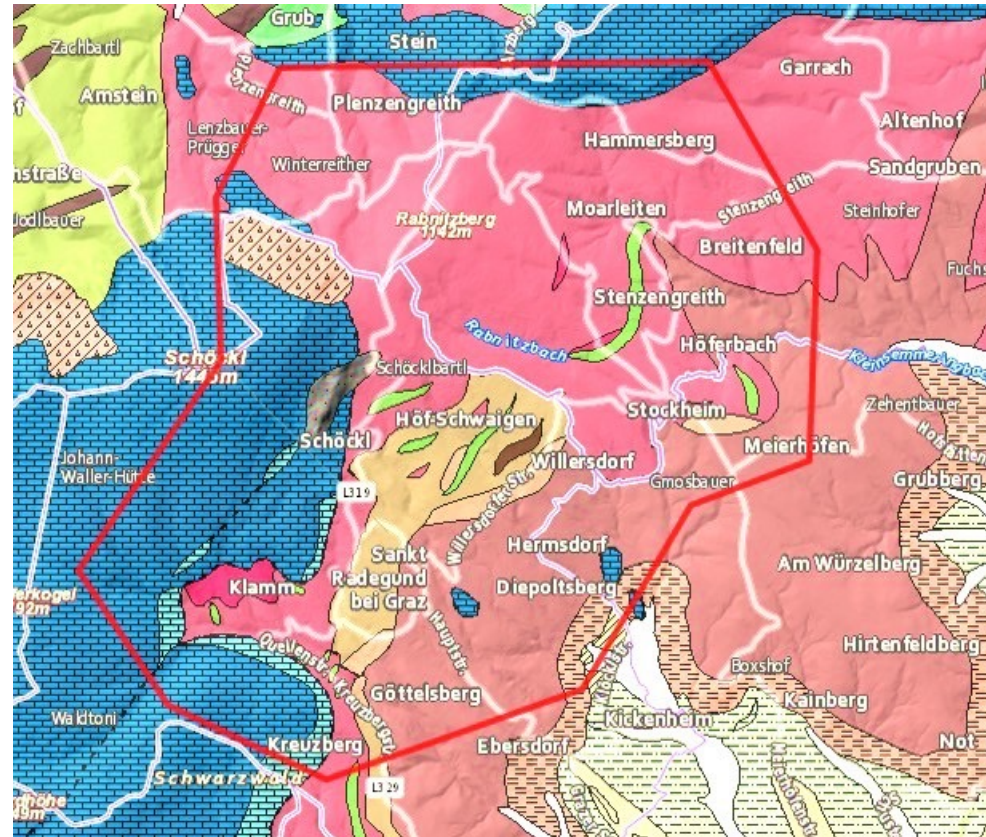
SANKT RAD PROPERTY

FLAGSHIP PROPERTY

- Confirmed geology of spodumene bearing pegmatites
- High grade historic Li samples
- Continuous sampling over 5 km strike

Geologie 1:50.000

-  Quarzgänge im Paläozoikum
-  Glimmerquarzite
-  Hellglimmerschiefer
-  Amphiboliteinschlungen im Radegunder Kristallin
-  Pegmatiteinschlungen im Radegunder Kristallin
-  Paragneise
-  Glimmerschiefer
-  Striatoporenkalk und Grenzzone des Schöckels: dunkle, plattige Kalke, Kalkschiefer, Serizitschiefer, Tonschiefer, Sandsteine, Rauchwacken
-  Schöckelkalk: dickbankige bis massive, graue bis weiß-grau-gebänderte Kalke und Kalkmarmore
-  (Rötliche) Lehme mit aufgearbeiteten kristallinen Schiefem
-  Eggenberger Brekzie
-  Höhere Terrassen fraglichen Alters, teilweise Lehmdecken bzw. Roterden
-  Hangschutt, Schutthalden (teilweise Würm)
-  Auzonen, Kolluvien, Wildbachschutt



5km

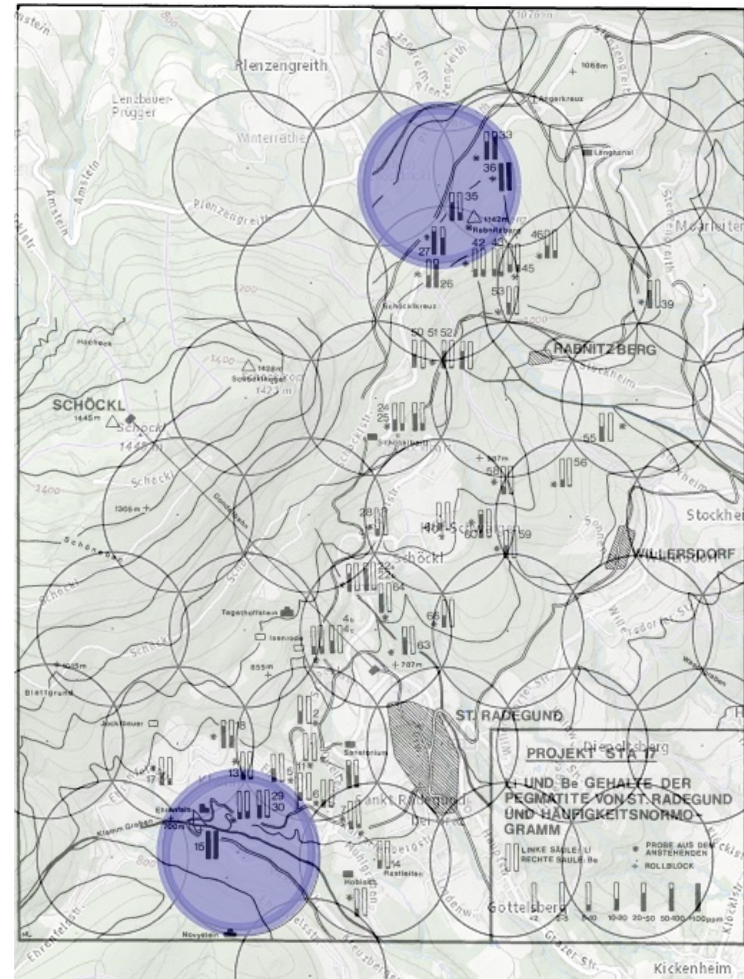
6km

SANKT RAD: PROVEN LITHIUM

5 km geological trend NNE oriented
 6 km² of continuous lithium samples
 2x Li samples over 7,000 ppm



www.am-resources.ca



In black: AM Resources exploration licenses
 In blue: Excluded exploration licenses

SANKT RAD HISTORICAL DATA

1980s historical reports :

“From the current distribution picture of the spodumene pegmatites, recommendations for further investigations seem essential to us ...”

“ further spodumene deposits are to be expected in the areas”

Von FRIEDRICH KOLLER, 1983

Tabelle 6: Spodumenanalysen der untersuchten Pegmatite; gsf = geschiefert.

Spodumene	Li Gew.-%	LiO ₂ Gew.-%	Be ppm
Ra 15	3,64	7,83	2,4
Ra 36a	3,23	6,95	1,7
Ra 36b	3,10	6,67	2,0
Ra 36c	3,13	6,74	2,9
Ra 36gsf	3,21	6,91	1,5
	$\bar{x} = 3,17$	$\bar{x} = 6,82$	

Tabelle 8: Durchschnittliche Lithium-, Beryllium- und Fluorgehalte [in ppm] ausgewählter Pegmatite und ihrer Hauptminerale Muskovit und Feldspat; Meßfehler bei Fluor 5 Rel.-%.

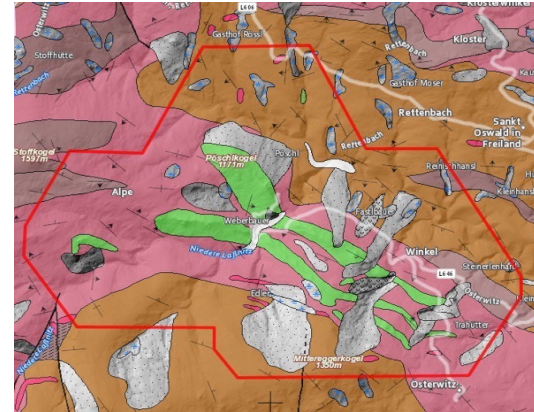
Probe	Lithium			Beryllium			Fluor		
	Gesamt-gestein	Muskovit	Feldspat	Gesamt-gestein	Muskovit	Feldspat	Gesamt-gestein	Muskovit	Feldspat
St. Radegund									
Ra 14A	7	42	3,50	4	2,7	4,5	204	1060	52
Ra 15	7200	360	n. b.	155	2,5	1,3	227	2310	13
Ra 27A	183	567	25	62	9,7	6,2	257	1800	26
Ra 36	8500	1630	(2540)*	159	9,7	5,5	100	1750	38
Ra 43	4	56	1	1,5	2,1	2,7	100	565	46
Ra 52	24	123	5,5	1	19	7	213	1210	70
Ra 60	50	330	65	0,7	2,3	4,5	260	1310	55

EAST WOLF PROPERTY

5 km N-E from Wolfsberg

Similar trend with pegmatite intruding in amphibolite host rock

No contemporary exploration



Geologie 1:50.000

- Eklogitamphibolite
- Amphibolite
- Pegmatit, Pegmatoid,

PROOF OF CONCEPT

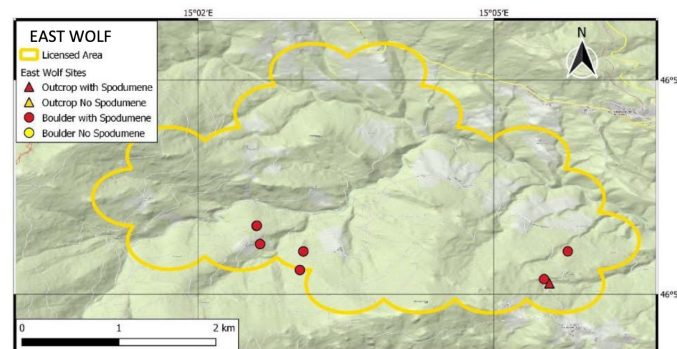
2023 Summer exploration campaign

Property 1st walk, mapping, sampling.

Spodumene DISCOVERY

6x Boulders

1x Outcrop



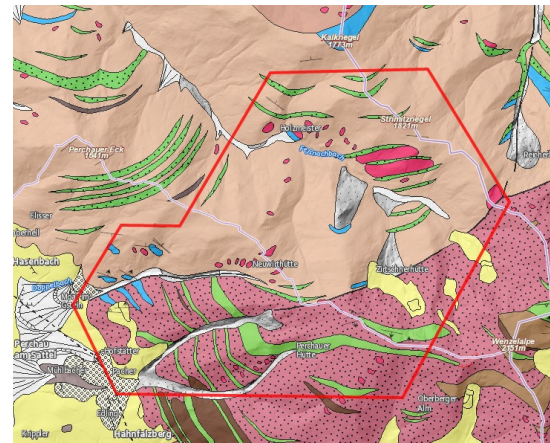
- Licensed Area
- East Wolf Sites**
- Outcrop with Spodumene
- Outcrop No Spodumene
- Boulder with Spodumene
- Boulder No Spodumene

LEGEND PROPERTY

Claimed area: >17 km²

Massive pegmatite structures sandwiched between amphibolite

No contemporary exploration



Geologie 1:50.000

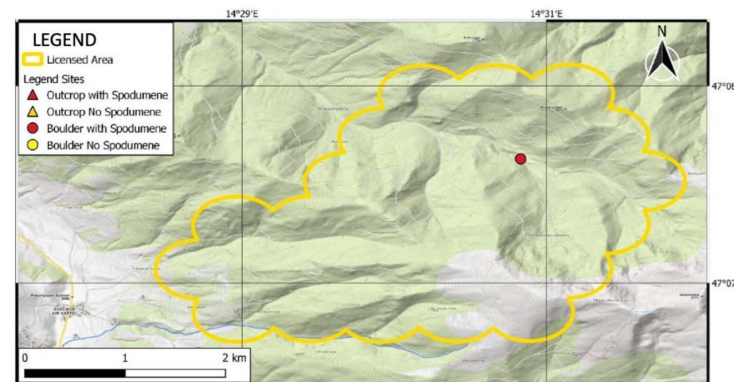
- Eklogitamphibolite
- Amphibolite
- Pegmatit, Pegmatoid,

PROOF OF CONCEPT

2023 Summer exploration campaign

Property 1st walk
(limited due to road closure)

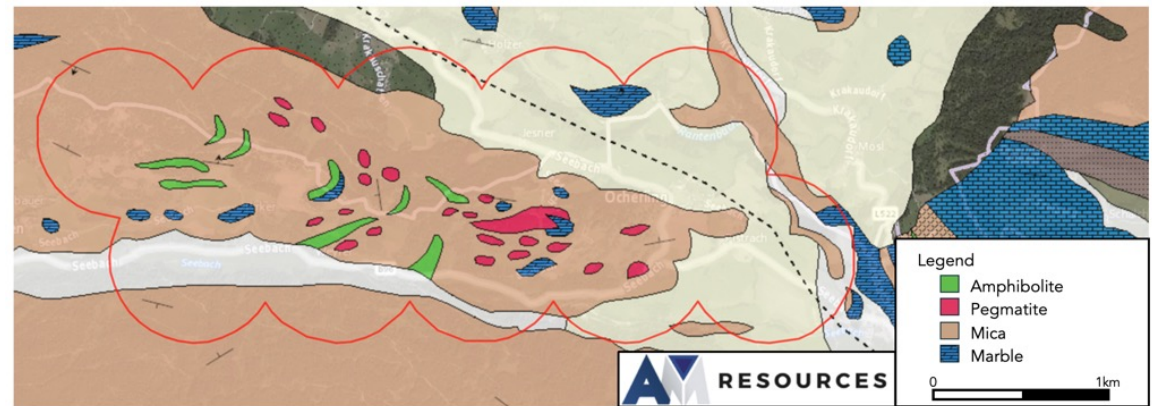
Spodumene **DISCOVERY**
1x Boulder



- Licensed Area
- East Wolf Sites**
- Outcrop with Spodumene
- Outcrop No Spodumene
- Boulder with Spodumene
- Boulder No Spodumene

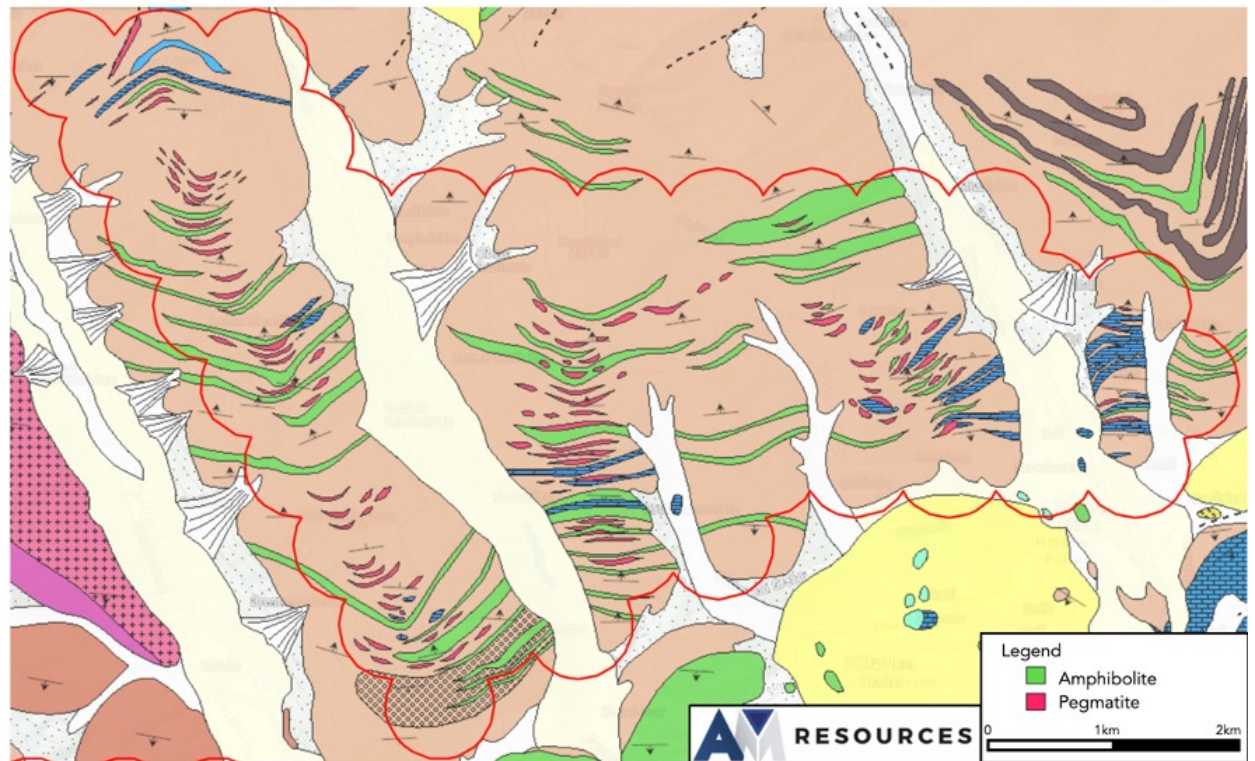
AMELIA PROPERTY

- Favorable geological structures
- Massive pegmatite structures sandwiched between amphibolite in mica schist
- No contemporary exploration
- 22 identified pegmatites
- area of 5.12 km²
- longest identified pegmatite measures over 505 metres in length and 110 meters wide



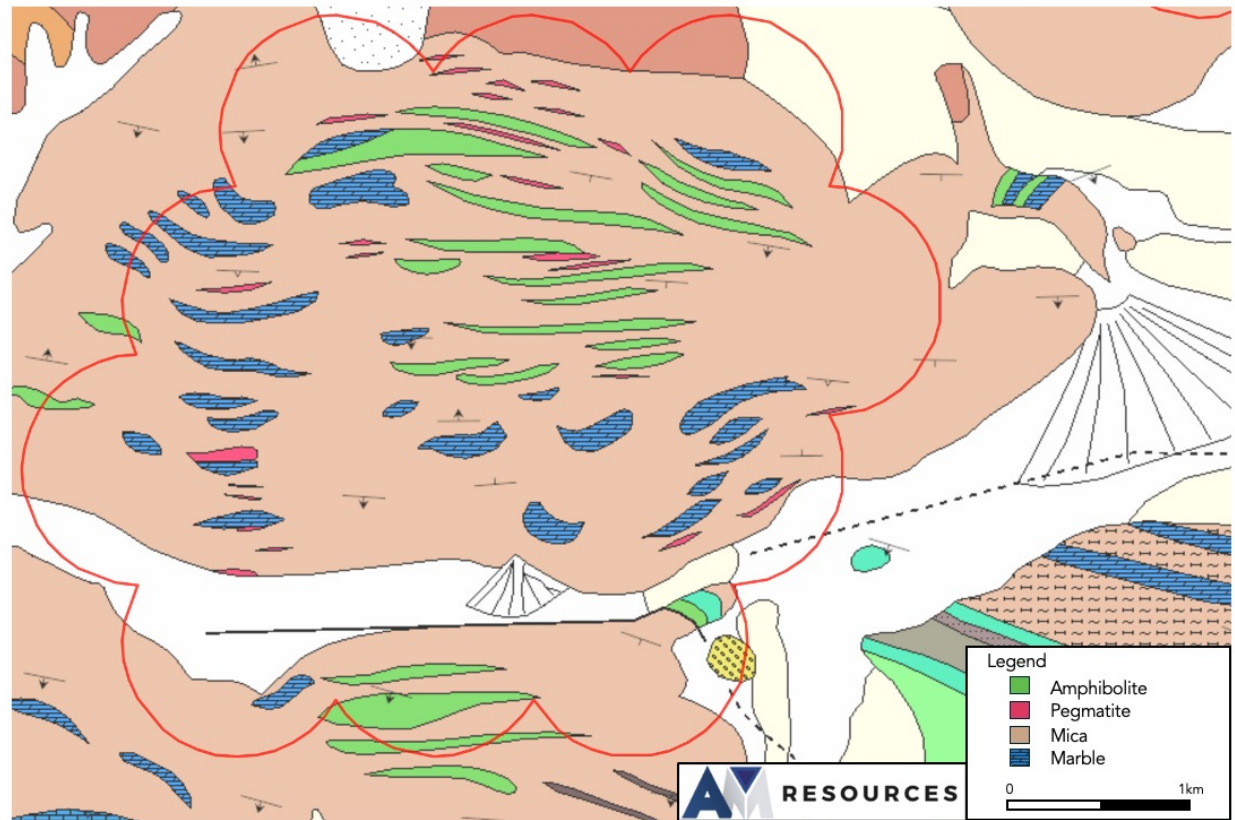
FREDERICK PROPERTY

- Favorable geological structures
- Massive pegmatite structures sandwiched between amphibolite in mica schist
- No contemporary exploration
- 112 identified pegmatites
- area of 52.25 km²
- longest identified pegmatite measures over 750 metres in length
- This property demonstrates the exceptional potential of the Austrian Pegmatite Belt



VALERIE PROPERTY

- Favorable geological structures
- Massive pegmatite structures sandwiched between amphibolite in mica schist
- No contemporary exploration
- 27 identified pegmatites
- area of 7.1 km²
- longest identified pegmatite measures over 447 metres in length with an average of over 203 meters





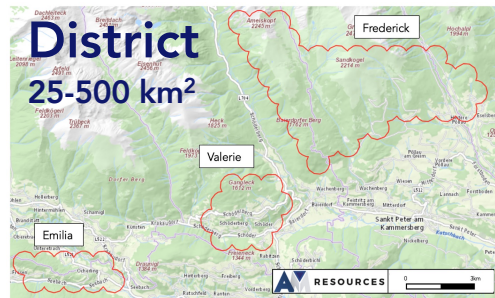
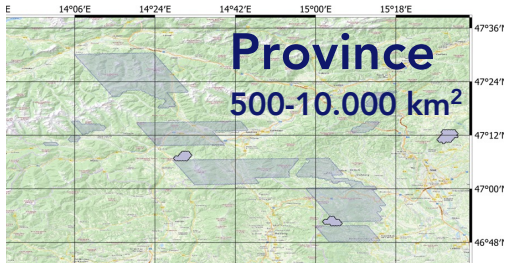
BOOTS ON THE GROUND

NEXT STEPS | CAPITAL STRUCTURE

www.am-resources.ca

TSXV: AMR 23

AM RESOURCES EXPLORATION PROGRAM STRUCTURE



Scale	Exploration method validated
Province scale (500 - 10,000 km ²)	Spectral identification of outcropping pegmatites
	Morphological identification of pegmatites using laser imaging, detection and ranging
	Remote-sensing-supported analysis of regional structures
	Spectral library of pegmatite ores and their wall rocks
District scale (25 - 500 km ²)	Airborne high-resolution magnetics with nose stinger
	Airborne high-resolution radiometry with nose stinger
	Airborne high-resolution electromagnetics
Prospect scale (<25 km ²)	Drone-borne radiometry
	Drone-borne hyperspectrometry
	Electric Resistivity Tomography: Resistivity and Induced Polarization
	Ground magnetics
	Ground spectral radiometry
	Ground penetrating radar
	Ground gravimetry
	Piezoelectric seismograph
	Geological mapping
	Prospect scale structural analysis
	Bulk rock geochemical mapping
	LIBS halo mapping
	Wall rock halo mapping using bulk rock chemistry
	Trace-element-in-quartz mapping
	Stream sediment geochemical mapping
	Soil A- and C-horizon geochemical mapping
Borehole logging	
Petrophysical database of European pegmatite ores and wall rocks	
All scales	Environmental, social and governance best practice in exploration for pegmatites

NEXT STEPS

PROJECTING AN ACTIVE HY-2024 YEAR

PROSPECTION AND SAMPLING PROGRAM

- EAST WOLF Summer 2024
- LEGEND Summer 2024
- FREDERICK Summer 2024
- VALERIE Summer 2024
- EMILIA Summer 2024

BOOTS ON THE GROUND

- 1 Senior geologist, 4 junior geologists
- 2 Pegmatite specialists

SUSTAINABILITY ENGAGEMENTS

- Completing Austrian advisory board
- Community relations with land owners

CONFERENCES

- Engaging in shaping Europe's critical metals vision
- Presenting AM Resources to new stakeholders all across Europe

www.am-resources.ca

AM RESOURCES IS A PROUD MEMBER OF



AM RESOURCES ATTENDED



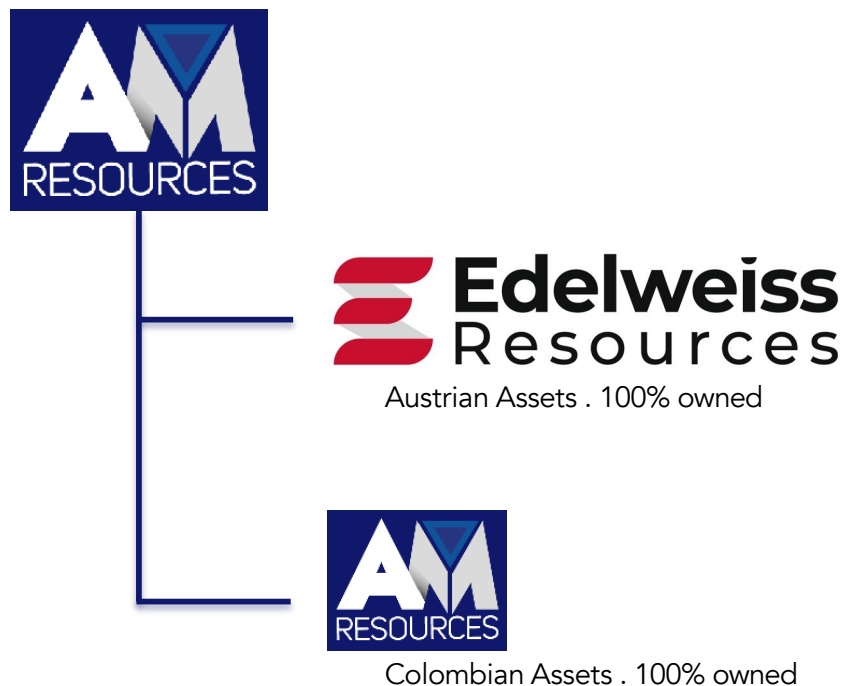
EU SUPERCLUSTER LAPLAND
GEOCONFERENCE



RESOURCING
TOMORROW

TSXV: AMR 25

COMPANY STRUCTURE



SHAREHOLDER STRUCTURE

LEAN OPERATIONAL STRUCTURE
& STRONG INSIDERS OWNERSHIP

Shares outstanding	157.12 million
Options	4.35 million
Warrants (@0.075 – 04/2025)	13.15 million
(@0.05 – 08/2025)	7.43 million
Shares fully diluted	191.37 million
Share price (as of April 2024)	\$CA 0.05
High – low (52 weeks)	\$CA 0.01 - \$CA 0.06
Management ownership	40.13%
David Grondin CEO	<20%
Julien Desrosiers COO	<11%
Other Insiders	<10%

COLOMBIAN LEGACY ASSETS



Esperanza (asphaltite)

The Company owns 60% of the Esperanza asphaltite property, which covers 298 hectares. The property lies 70 km north-northwest of Bucaramanga.

Rio Negro (asphaltite)

The Company owns 60% of the Rio Negro asphaltite property, which covers 97.5 hectares. The property lies 50 km north-northwest of Bucaramanga.

Mico (gold)

The Company has an option to acquire a 60% interest in the property by incurring minimum expenditures of \$50,000 over a 12-month period. The property consists of one concession covering 10.4 hectares, and is easily accessible from the village of Barranco de Loba. Furthermore, the Company has filed an application to acquire an additional 6,000 hectares.

Mina Luz (coal)

The Company owns 80% of the property mining rights, which consist of a mining concession covering 40 hectares. The property lies southwest of Popayan and 150 km southwest of Cali.



EXPLORING FOR LITHIUM IN AUSTRIA
TSXV: AMR

CONTACT

DAVID GRONDIN, CEO
JULIEN DESROSIERS, VP EUROPE

| dgrondin@am-resources.ca
| julien@edelweissresources.at

www.am-resources.ca