



## EXPLORING FOR LITHIUM IN AUSTRIA

TSXV: AMR

# INVESTOR PRESENTATION

FEBRUARY 2024

[www.am-resources.ca](http://www.am-resources.ca)

## DISCLAIMER

This presentation contains certain “forward-looking statements”, including, but not limited to, statements regarding the Company’s strategic plans, timetables, the evolution of mineral reserves and resources, mine operating costs, capital expenditures, work programs, development plans, exploration programs, objectives, budgets and the possible determination of additional reserves. Forward looking statements express, at this date, the Company’s plans, estimates, forecasts, projections, expectations or beliefs as to future events and results.

Forward-looking statements involve a number of risks and uncertainties, and there can be no assurance that such statements will prove to be accurate. Therefore, actual results and future events could differ materially from those anticipated in such statements. Risks and uncertainties that could cause results or future events to differ materially from current expectations expressed or implied by the forward-looking statements include, but are not limited to, factors associated with fluctuations in the market price of metals, mining industry risks, exploration risks, environmental risks and hazards, uncertainty as to calculation of mineral reserves, requirement of additional financing or additional permits, authorizations or licenses, and risks of delays in construction and production.

# AM RESOURCES PROFILE

## ABOUT US

### VISION

Development of lithium (Li) exploration properties in Austria

### MISSION

Maximizing shareholders' return through sustainable economic and environmental mineral deposit development with a European first approach.

### COMMITMENT

Employ the latest and most efficient, sustainable exploration techniques.

## SOLID TEAM AND STAKEHOLDERS

- Experienced Management, Board and Advisory committee
- Solid technical team with both local geologists specialists and pegmatite experience
- Insiders and current management own over 40% of total share structure

## EXPLORATION ASSETS

### CLAIMS

- 3 set of exploration licenses 100% owned
- Proven lithium samples with grade up to 2,29 % Li<sub>2</sub>O
- Total of 60 km<sup>2</sup> of prospective land with favorable geology
- Main asset within 5 km of Austria's Wolfsberg past producing lithium mine about to restart
- 100% ownership of Edelweiss Resources

## EXPLORATION IN AUSTRIA

- Tier 1 mining jurisdiction with political will to encourage mining
- Realistic low-cost exploration budget
- Long mining tradition with the oldest operating mine (over 700 years)



## **SOLID MINING AND FINANCIAL EXPERTISE**

MANAGEMENT TEAM | BOARD OF DIRECTORS | ADVISORY BOARD

# LEADERSHIP

## MANAGEMENT TEAM

David Grondin, President & CEO  
Arnab De, CPA CA, CFO  
Julien Desrosiers, VP Europe  
Adriana Rios Garcia, VP Latin America

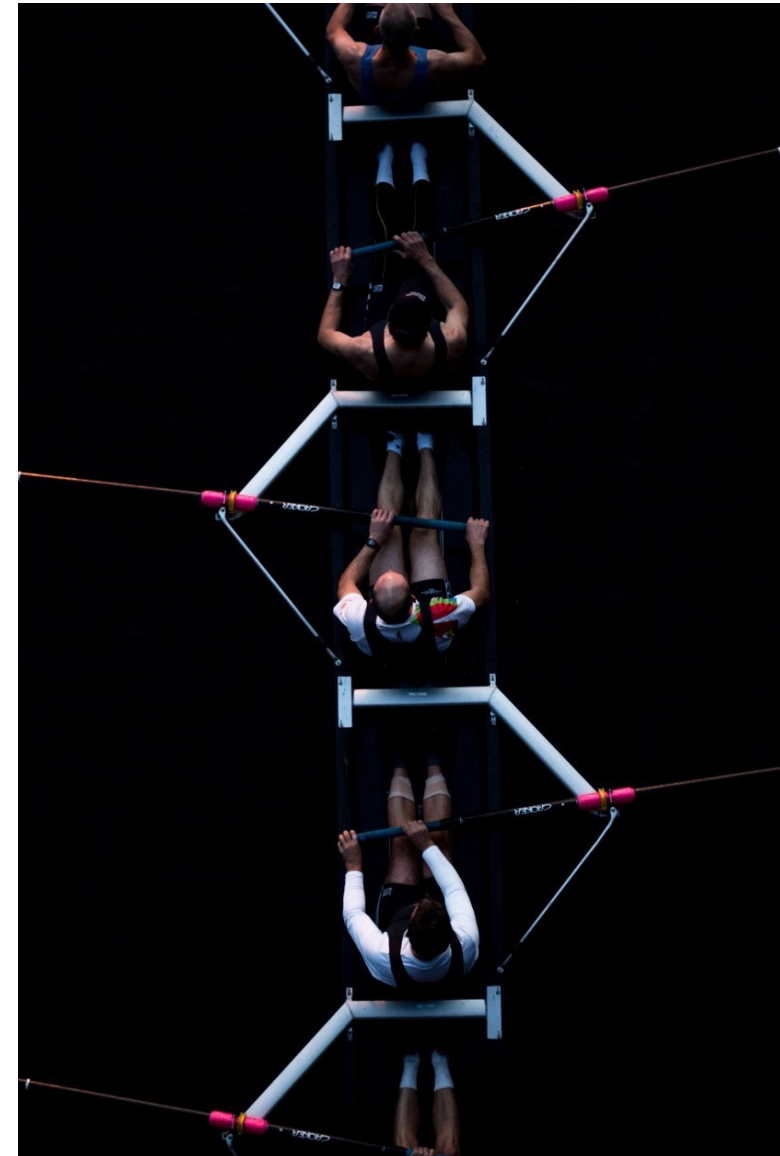
## BOARD OF DIRECTORS

David Grondin  
Dominic Voyer  
Wayne Isaacs  
Julien Desrosiers\*  
Martin Nicoletti\*

## AUSTRIAN ADVISORY BOARD

TBA

[www.am-resources.ca](http://www.am-resources.ca)





## WHY AUSTRIA

STRATEGIC LOCATION | TIER 1 JURSDICTION | THOUSANDS OF YEARS OF MINING HISTORY

# AUSTRIA's STRATEGIC LOCATION

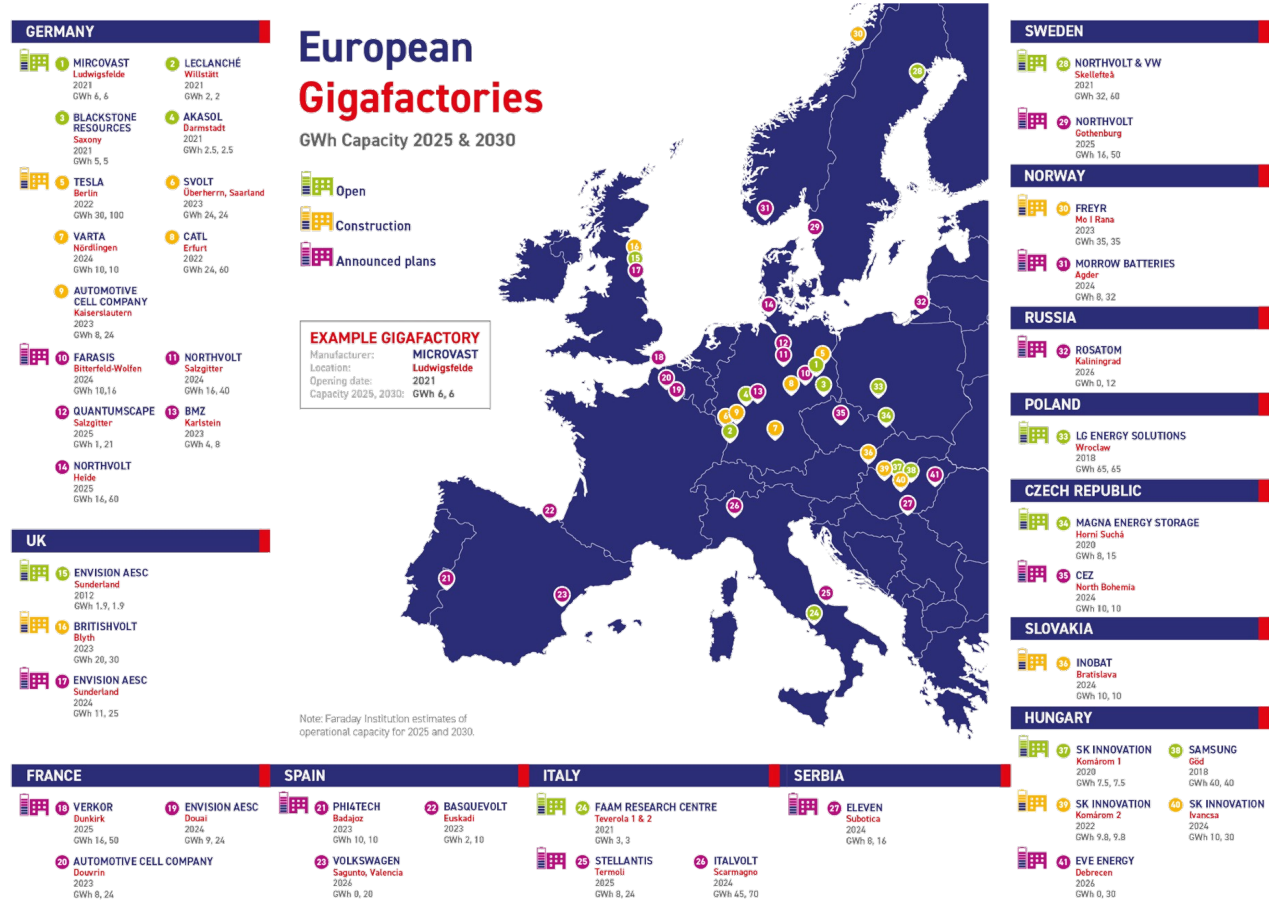
## EUROPEAN EV MARKET

- Global EV revolution on going worldwide
- 20+ gigabattery factories planned in Europe in coming years
- European Critical Raw Materials Act adoption in Q1 2023
- 80% lithium self sufficiency targeted by 2025

## AUSTRIA

- Fisker's electric car manufacturer plant
- Mercedes G wagon manufacturing plant
- Current project to reopen Wolfsberg lithium mine

www.am-resources.ca



TSXV: AMR 7

# AUSTRIA TIER 1 JURIDICTION

## LEGAL FRAME

- Clear juridic framework, tested and proven
- Stable democratic government

## ACTIVE MINING INDUSTRY

- Over 4,000 active workforce
- Over 300 active mines
- Die Vision der Österreichischen Rohstoffstrategie 2030

## INFRASTRUCTURE

- Renewable energy provides >70%
- Great roads and railroad network
- Housing is low cost
- Complete mining services industry
- Easy supply chain and logistics

[www.am-resources.ca](http://www.am-resources.ca)





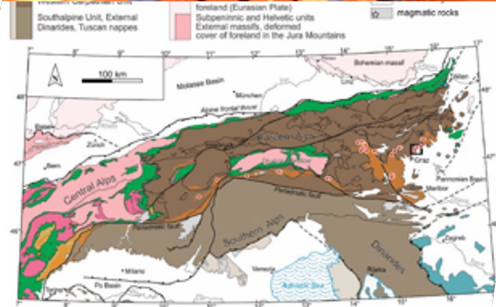


Fig. 1: Tectonic map of the Alps showing the paleogeographic origin of the major tectonic units of the Alps (modified after FROITZHEM et al., 2008). Additionally, the distribution of complexes contain Permian pegmatite and spodumene pegmatite is highlighted (modified after MALI, 2004 and KNOU al., 2018). Black square indicates the area of St. Radegund shown in Figure 6.

## AUSTRIA MINING INDUSTRY



High potential for new discoveries

- Austria has thousands of years of mining history but limited modern exploration

Government wants to induce more exploration

- Mining is now under the Ministry of Finance

Renewable energy and impeccable logistics

- 100% renewable energy by 20230
- Railway density 59.2 km per 1,000 km<sup>2</sup> (EU avg. 47.4)

Mittersill (Sandvik) and Breitanau (RHI)

- Current successful operating underground mines

EU new critical mineral policy expected in Q2 2023

- Austria building European next lithium mine

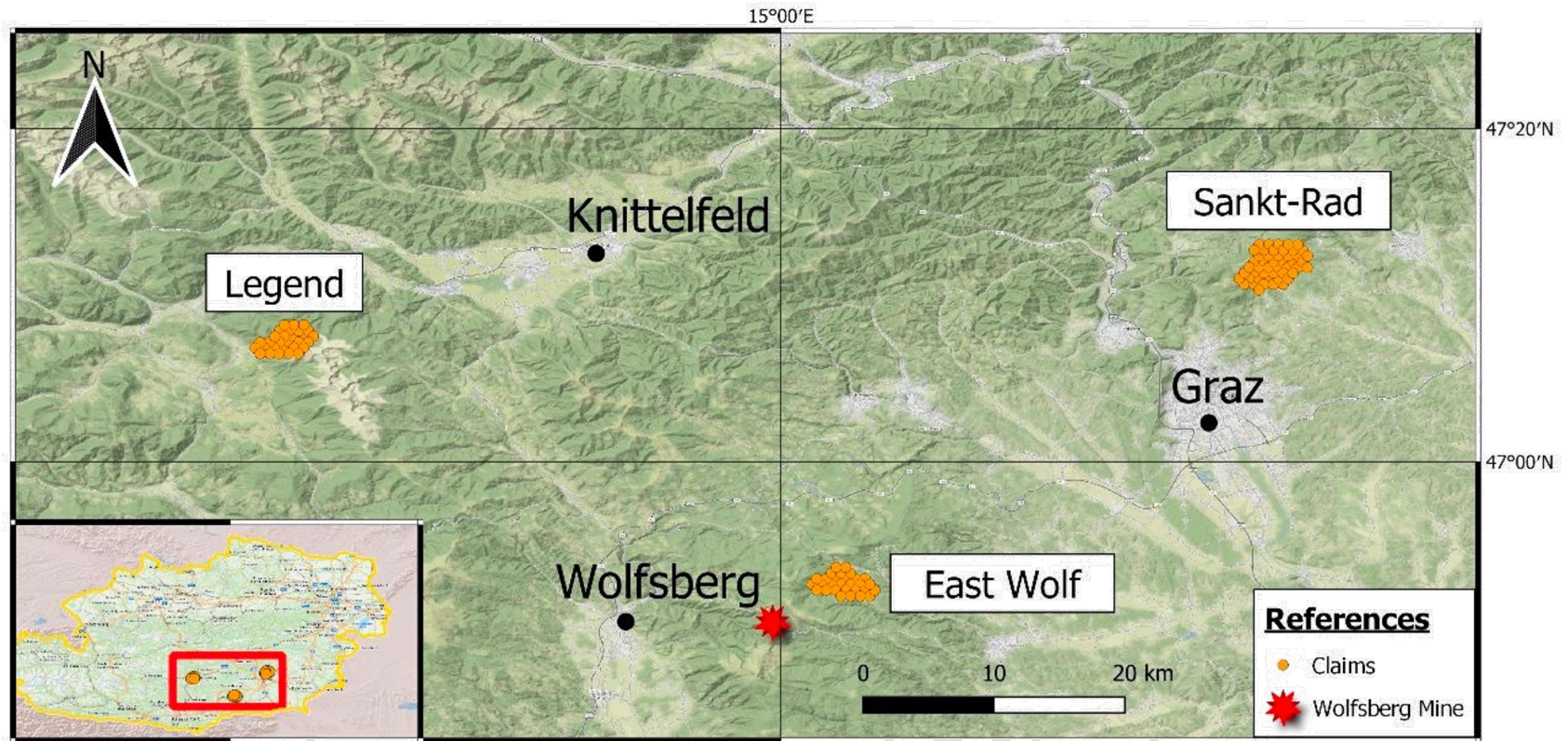


## EXPLORATION LICENCES

62 EXPLORATION LICENCES | 58 SQ. KM | LITHIUM SAMPLING UP TO 2.31%

# 62 EXPLORATION LICENCES

100% OWNED EXPLORATION LICENSES TOTALING OVER 58 KM<sup>2</sup> OF LAND

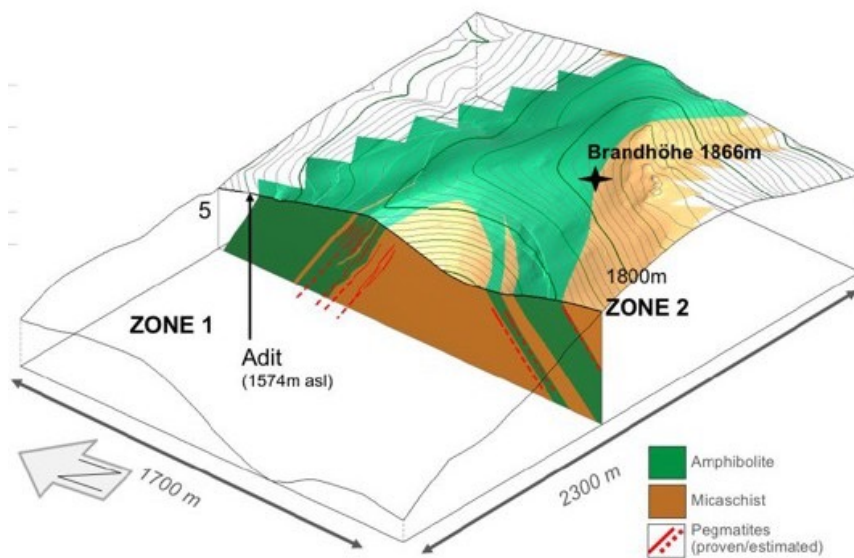


# TRYING TO DUPLICATE WOLFSBERG DEPOSIT GEOLOGY

Pegmatites intruding amphibolite host rock

12.88m tones at 1%  $\text{Li}_2\text{O}$

Benchmark for our exploration



[www.am-resources.ca](http://www.am-resources.ca)



TSXV: AMR












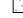


12

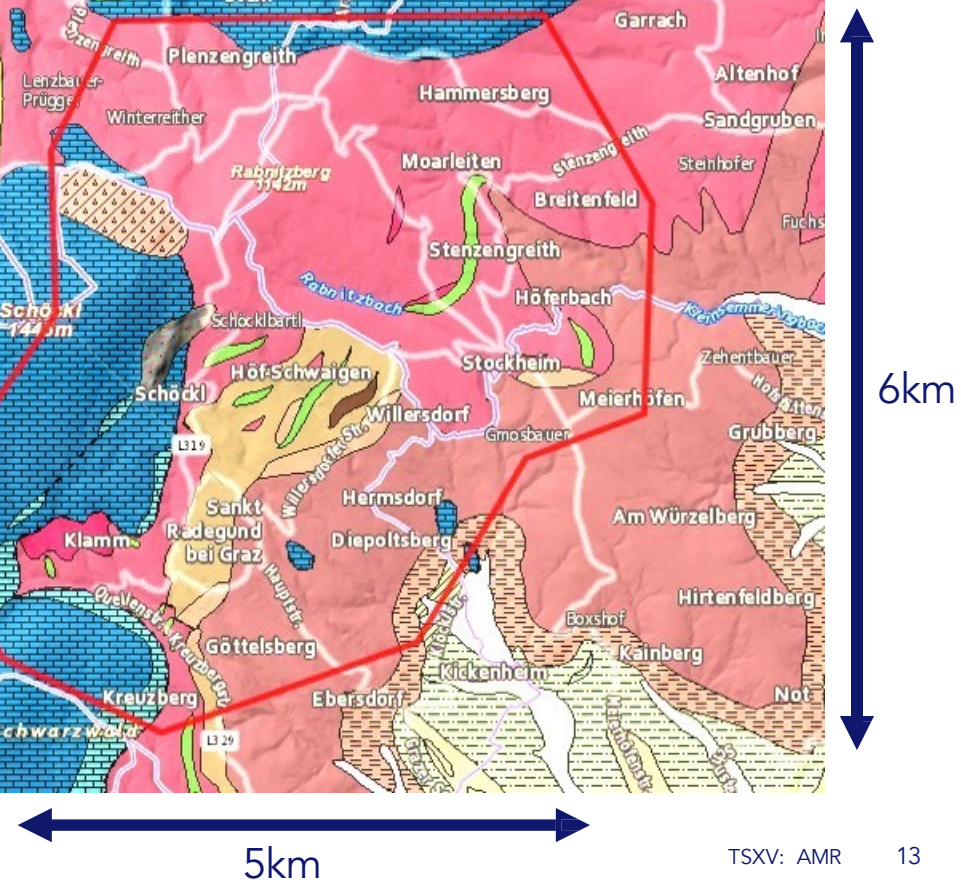
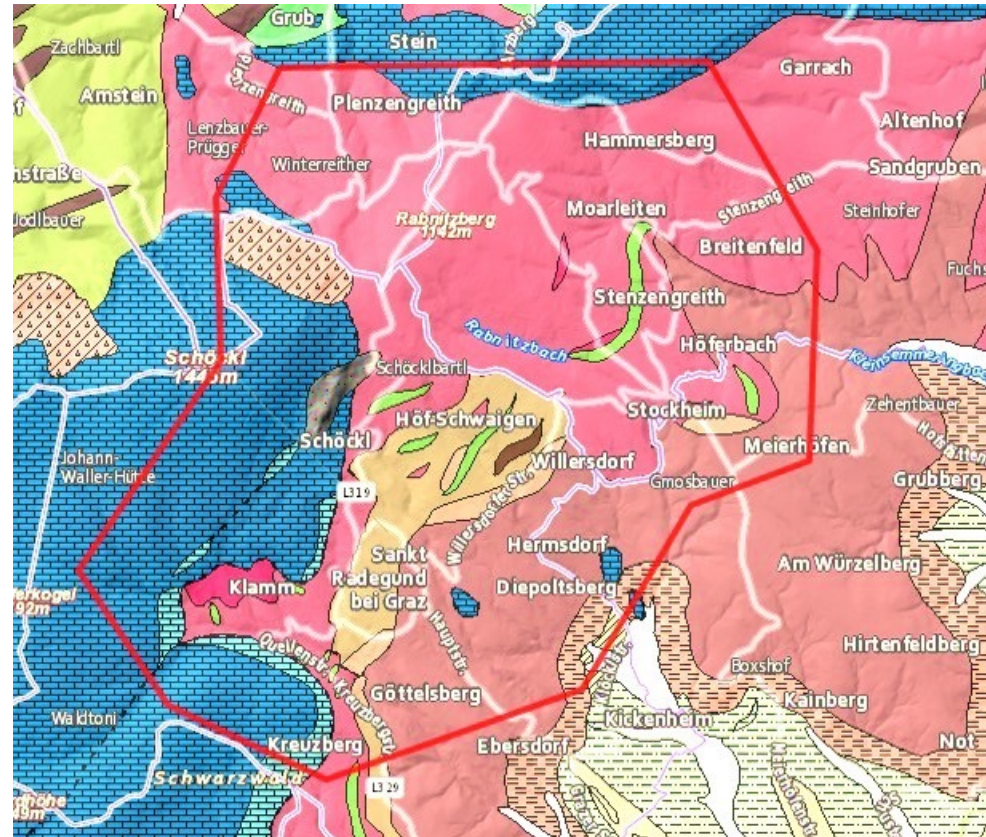
# SANKT RAD PROPERTY

## FLAGSHIP PROPERTY

- Confirmed geology of spodumene bearing pegmatites
- High grade historic Li samples
- Continuous sampling over 5 km strike

Geologie 1:50.000

-  Quarzgänge im Paläozoikum
-  Glimmerquarzite
-  Hellglimmerschiefer
-  Amphiboliteinschlaltungen im Radegunder Kristallin
-  Pegmatiteinschlaltungen im Radegunder Kristallin
-  Paragneise
-  Glimmerschiefer
-  Striatoporenkalk und Grenzzone des Schöckels: dunkle, plattige Kalke, Kalkschiefer, Serizitschiefer, Tonschiefer, Sandsteine, Rauchwacken
-  Schöckelkalk: dickbankige bis massive, graue bis weiß-grau-gebänderte Kalke und Kalkmarmore
-  (Rötliche) Lehme mit aufgearbeiteten kristallinen Schiefem
-  Eggenberger Brekzie
-  Höhere Terrassen fraglichen Alters, teilweise Lehmdecken bzw. Roterden
-  Hangschutt, Schutthalden (teilweise Würm)
-  Auzonen, Kolluvien, Wildbachschutt

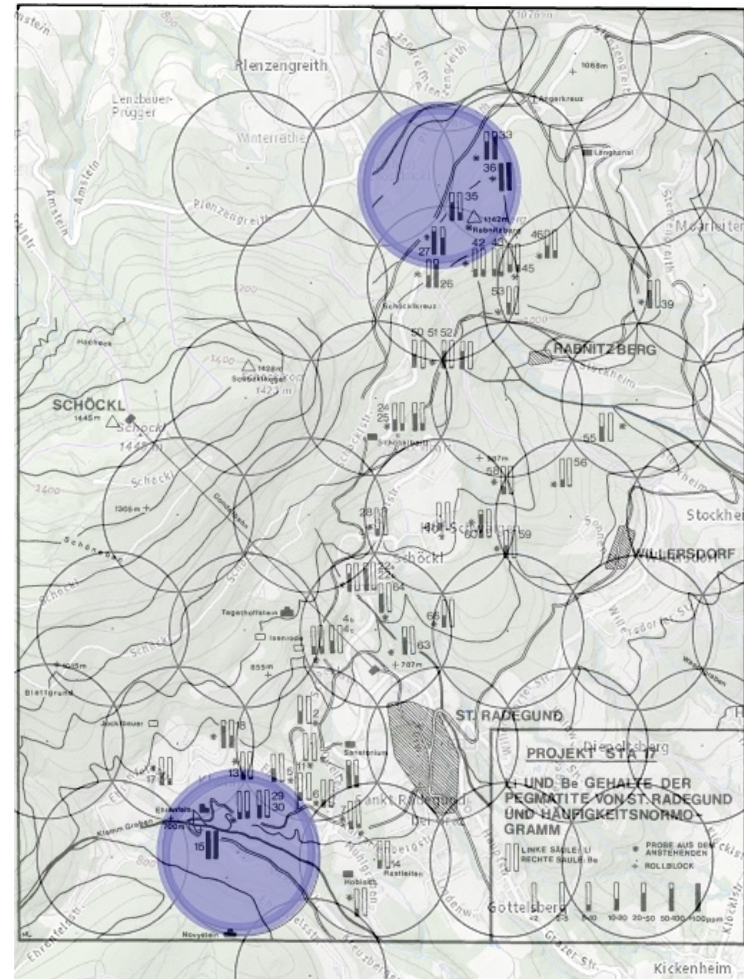


# SANKT RAD: PROVEN LITHIUM

5 km geological trend NNE oriented  
 6 km<sup>2</sup> of continuous lithium samples  
 2x Li samples over 7,000 ppm



[www.am-resources.ca](http://www.am-resources.ca)



In black: AM Resources exploration licenses  
 In blue: Excluded exploration licenses

## SANKT RAD HISTORICAL DATA

1980s historical reports :

“From the current distribution picture of the spodumene pegmatites, recommendations for further investigations seem essential to us ...”

“ further spodumene deposits are to be expected in the areas”

Von FRIEDRICH KOLLER, 1983

**Tabelle 6: Spodumenanalysen der untersuchten Pegmatite; gsf = geschiefert.**

Spodumene	Li Gew.-%	LiO <sub>2</sub> Gew.-%	Be ppm
Ra 15	3,64	7,83	2,4
Ra 36a	3,23	6,95	1,7
Ra 36b	3,10	6,67	2,0
Ra 36c	3,13	6,74	2,9
Ra 36gsf	3,21	6,91	1,5
	$\bar{x} = 3,17$	$\bar{x} = 6,82$	

**Tabelle 8: Durchschnittliche Lithium-, Beryllium- und Fluorgehalte [in ppm] ausgewählter Pegmatite und ihrer Hauptminerale Muskovit und Feldspat; Meßfehler bei Fluor 5 Rel.-%.**

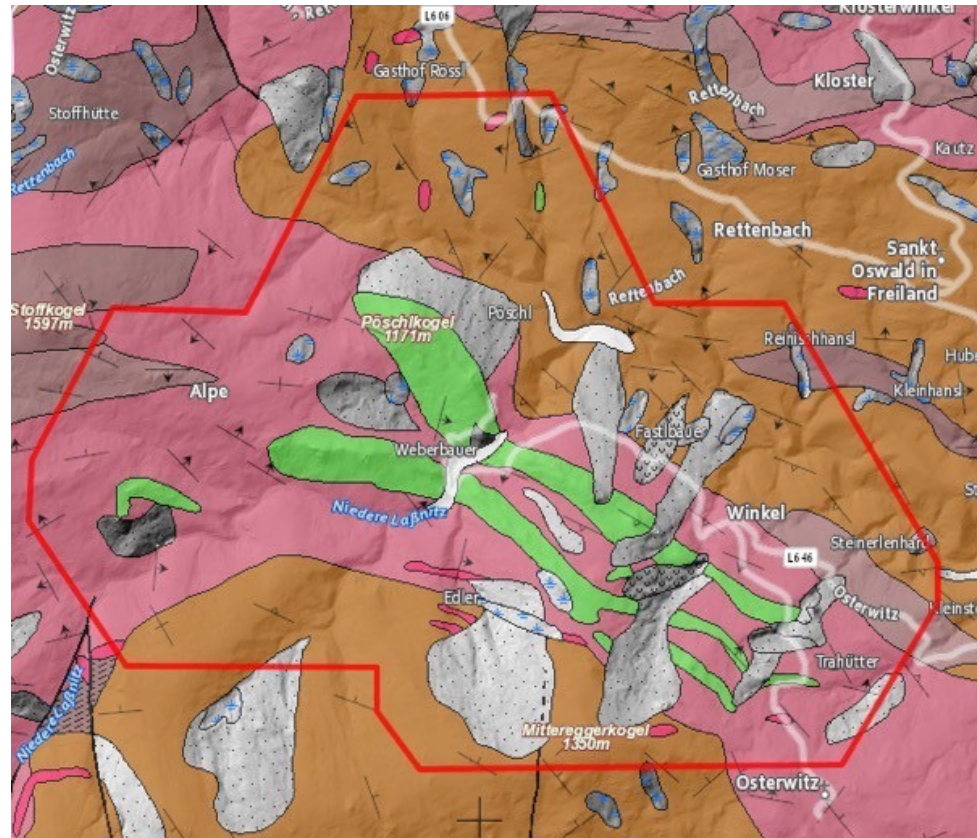
Probe	Lithium			Beryllium			Fluor		
	Gesamt-gestein	Muskovit	Feldspat	Gesamt-gestein	Muskovit	Feldspat	Gesamt-gestein	Muskovit	Feldspat
St. Radegund									
Ra 14A	7	42	3,50	4	2,7	4,5	204	1060	52
Ra 15	7200	360	n. b.	155	2,5	1,3	227	2310	13
Ra 27A	183	567	25	62	9,7	6,2	257	1800	26
Ra 36	8500	1630	(2540)*	159	9,7	5,5	100	1750	38
Ra 43	4	56	1	1,5	2,1	2,7	100	565	46
Ra 52	24	123	5,5	1	19	7	213	1210	70
Ra 60	50	330	65	0,7	2,3	4,5	260	1310	55

# EAST WOLF PROPERTY

5 km N-E from Wolfsberg  
 Similar trend with pegmatite intruding in amphibolite host rock  
 No contemporary exploration

## Geologie 1:50.000

- Eklogitamphibolite
- Amphibolite
- Pegmatit, Pegmatoid, pegmatoid durchtränkte Zone
- Gneis, Glimmerschiefer i. a. /Gneisquarzit
- Kataklastischer Gneisquarzit
- Plattengneis Typus Stainz: +/- blastomylonitischer, eb
- Hirschegger Gneis: linsig-lagiger pegmatoider Gneis
- Rutschhang, größere Rutschungen
- Hangschutt, Schutthalden (teilweise Würm)
- Auzonen, Kolluvien, Wildbachschutt
- Moor, Torf, Sumpf, Vernässung





# LEGEND PROPERTY

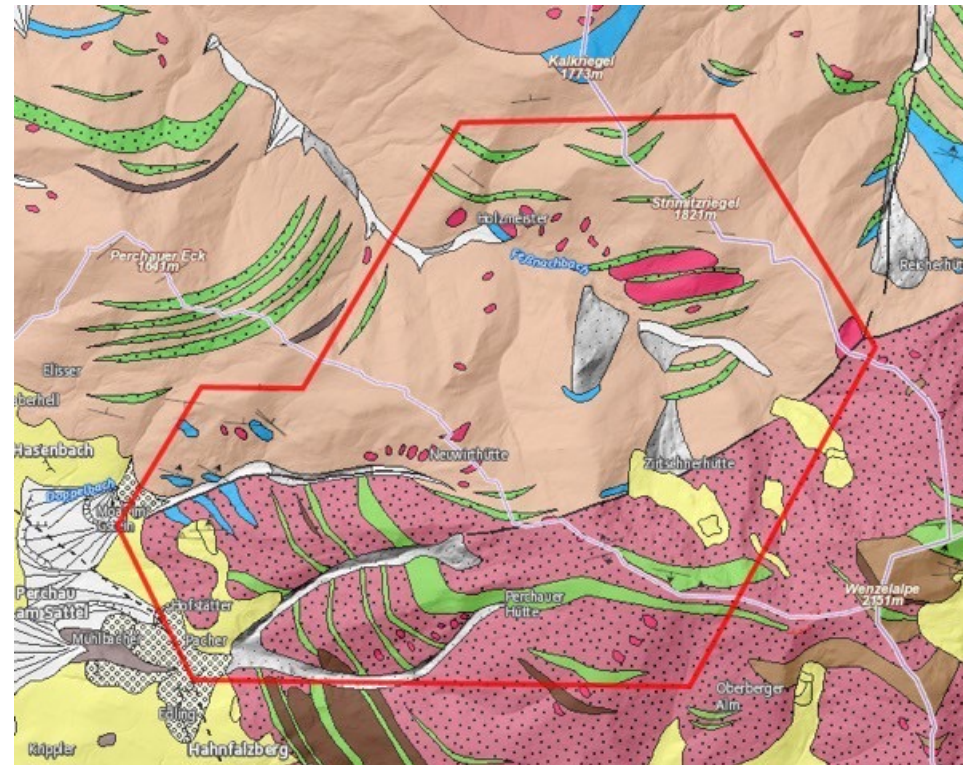
Favorable geological structures

Massive pegmatite structures sandwiched between amphibolite

No contemporary exploration

Geologie 1:50.000

- Marmor, Bretsteinmarmor
- Amphibolit, biotitisierter Granatglimmerschiefer, Eklogitamphibolit
- Schiefergneis
- Pegmatit, Pegmatitschwarm
- Quarzite in den Glimmerschiefern
- Feldspat-Granatglimmerschiefer
- Marmor
- Amphibolit, Eklogitamphibolit
- Pegmatit
- Biotit-Muskowit-Plagioklasgneis, vereinzelt mit Disthen
- Quarzit
- Pegmatitisierter Granatglimmerschiefer, teilweise mit Disthen und Staurolith
- Kohlenstoffquarzphyllit bis Kohlenstoffgranatphyllit
- Wallförmige Ufermoränen (End- und Seitenmoränen)
- Grundmoräne, Moränen i. a., tlw. verschwemmt
- Staukörper am Eisrand, Eisrandterrassen
- Hangschutt, Schutthalden (teilweise Würm)
- Schwemmfächer, Schwemmkegel, Murenkegel (z.T. spät- postglazial)



4,6km

4km



# BOOTS ON THE GROUND

NEXT STEPS | CAPITAL STRUCTURE

[www.am-resources.ca](http://www.am-resources.ca)

TSXV: AMR 18

## NEXT STEPS

### PROJECTING AN ACTIVE HY-2024 YEAR

#### PROSPECTION AND SAMPLING PROGRAM

- SANKT RAD Spring 2024
- EAST WOLF Spring 2024
- LEGEND Summer 2024

#### BOOTS ON THE GROUND

- 1 Senior geologist, 4 junior geologists
- 2 Pegmatite specialists

#### SUSTAINABILITY ENGAGEMENTS

- Completing Austrian advisory board
- Community relations with land owners

#### CONFERENCES

- Engaging in shaping Europe's critical metals vision
- Presenting AM Resources to new stakeholders all across Europe

[www.am-resources.ca](http://www.am-resources.ca)

AM RESOURCES IS A PROUD MEMBER OF



AM RESOURCES ATTENDED



EU SUPERCLUSTER LAPLAND  
GEOCONFERENCE



TSXV: AMR

19

## COLOMBIAN LEGACY ASSETS



### Esperanza (asphaltite)

The Company owns 60% of the Esperanza asphaltite property, which covers 298 hectares. The property lies 70 km north-northwest of Bucaramanga.

### Rio Negro (asphaltite)

The Company owns 60% of the Rio Negro asphaltite property, which covers 97.5 hectares. The property lies 50 km north-northwest of Bucaramanga.

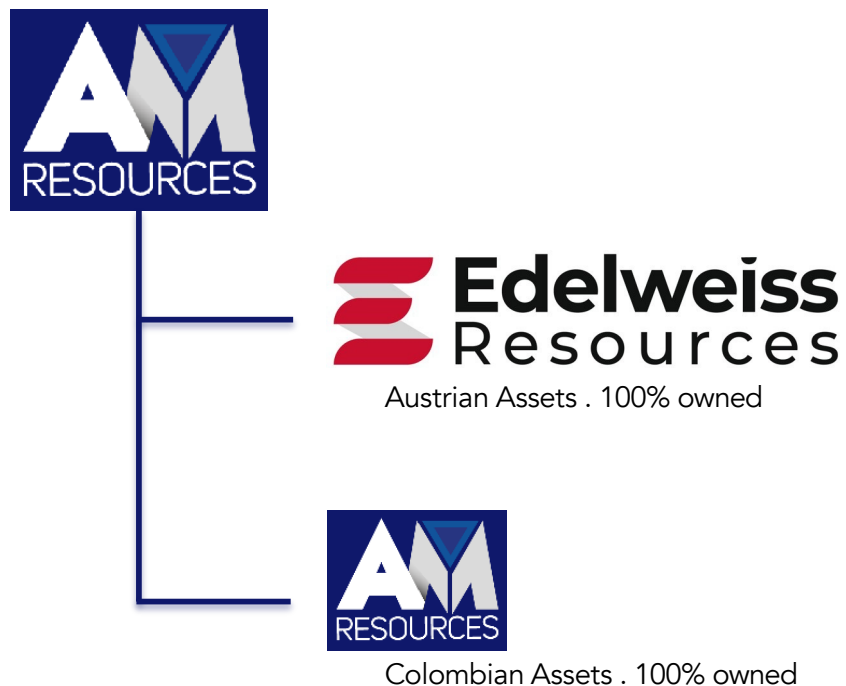
### Mico (gold)

The Company has an option to acquire a 60% interest in the property by incurring minimum expenditures of \$50,000 over a 12-month period. The property consists of one concession covering 10.4 hectares, and is easily accessible from the village of Barranco de Loba. Furthermore, the Company has filed an application to acquire an additional 6,000 hectares.

### Mina Luz (coal)

The Company owns 80% of the property mining rights, which consist of a mining concession covering 40 hectares. The property lies southwest of Popayan and 150 km southwest of Cali.

## COMPANY STRUCTURE



## SHAREHOLDER STRUCTURE

LEAN OPERATIONAL STRUCTURE  
& STRONG INSIDERS OWNERSHIP

Shares outstanding	157.12 million
Options	4.35 million
Warrants (@0.075 – 04/2024)	13.15 million
(@0.05 – 08/2025)	7.43 million
Shares fully diluted	191.37 million
Share price (as of January 2023)	\$CA 0.03
High – low (52 weeks)	\$CA 0.01 - \$CA 0.03
Insiders' ownership	40.13%



## EXPLORING FOR LITHIUM IN AUSTRIA

TSXV: AMR

### CONTACT

DAVID GRONDIN, CEO

| [dgrondin@am-resources.ca](mailto:dgrondin@am-resources.ca)

JULIEN DESROSIERS, VP EUROPE

| [julien@edelweissresources.at](mailto:julien@edelweissresources.at)